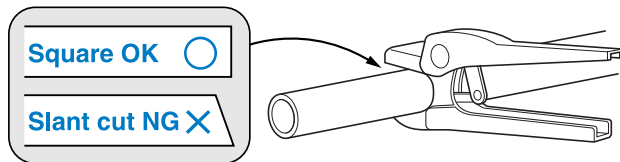


# MECHFit Installation Procedure

**STOP USE AND ASK US IF SOMETHING DOES GO WRONG WITH THE FITTING.**

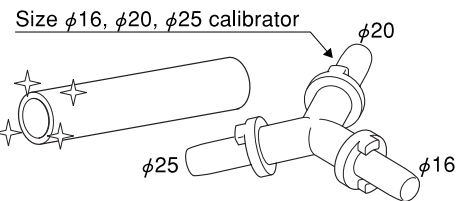
## 1 Cutting of Pipe

Cut the pipe square using an adequate pipe cutter and check that there is no chip inside the pipe. The cut must be squared.



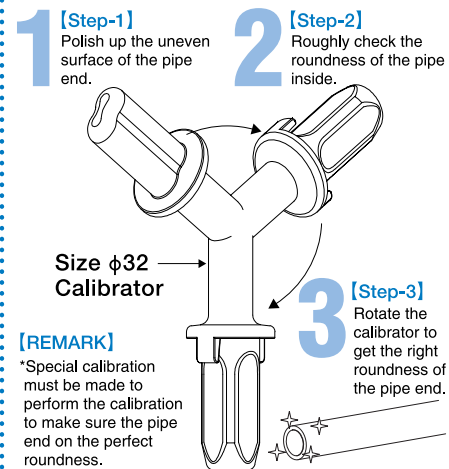
## 2 Calibrate of Pipe

Use dedicated calibrator (Ivory color). Slide the calibrator into the pipe turn it to calibrate the pipe.

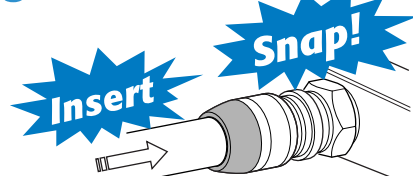


### 32 size PEX and MultiPEX Chamfering of pipe

Any burr, dust and scrape present in the pipe may cause leakage after installation. Please use dedicated calibrator and perform proper procedure along with step 1, 2 and 3.



## 3 Insertion of Pipe



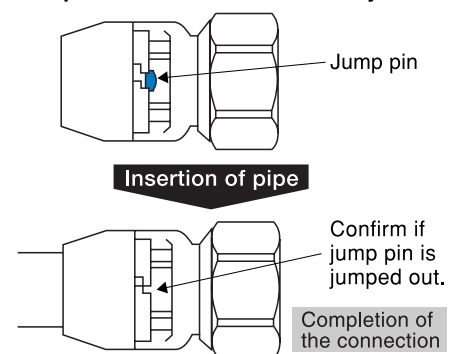
Insert the pipe straight into the fitting when you hear "snap" sound, the Work is over, in doubt look into the transparent body to check up the jump pin has come off.

## 4 Check the completion

Insufficient connection may cause water leakage. Please check the completion of the job.

**! CAUTION**

Especially in cold region, it needs at least 3 hours before your pressure test to perform its function correctly.



## READ ME!

Thank you for using our products.

### ! PRECAUTION



**!** We assume no responsibility whatever for any damages resulting from the misuse of it.

- Pipe design**
  - !** This fitting is exclusive for manufacturer's nominated pipe. Even if the same dimension, MECHFit cannot be used for other brand and different pipe.
  - !** This is exclusive use for hot and cold (chiller) water application inside of buildings.
  - !** The fitting parts inside can be very dangerous. Do not allow children to play. To avoid serious injury occur, never attempt to disassemble the fitting.
- Keep the Products**
  - !** Keep the fittings and pipe materials inside of the building.
  - !** The materials must be stored away from thinners, fluxes, paints, chemicals or petroleum based materials.
  - !** Keep the fitting away from the direct sunlight.
  - !** Avoid contact of the fitting with hard dropping impact
- Logistics**
  - !** Keep the fitting safe in transportation.
- Installation**
  - !** When using seal tape on thread part, do not use any anaerobic sealing materials and/or glue.
  - !** Also never put the solvent materials, anaerobic sealant/adhesive, highly-volatile paint, glue etc. on the plastic part of the fitting both directly and indirectly.
  - !** Avoid fittings to exposure from dust and dirt in installation. The contamination materials may cause a leakage problem.
  - !** Never make installation job near fire and/or high temperature device.
  - !** Never try to bend the pipeline or adjust a bending at the fitting.

### Water pressure test

- Before complete the construction work when the replacement and inspection work is finished, you shall organize the water pressure test of the application.
- Air bleeding of pipe inside shall be done before water pressure increase. Insufficient air bleeding is dangerous.
- Check the deficit connecting points by visual. Check the head assy thru the transparent body if there comes leak inside or not. You may misjudge that the leakage in case that disrelated water or dew condensation run thru on the pipe externally, the fitting can be seen getting water inside the transparent body. Unless there comes the leak continually, you can continue the pressure test with no problem. You blow out the water inside of head assy by compression air, while you can leave it till disappeared. Because the metal components inside of head assy are anti-corrosion finished, do no need worry about the corrosion problem that affect the fitting performance. When the leakage was confirmed at the connection, cut the pipe from the fitting and re-install the new fitting. (The pipe shall be cut approx. 3cm left with the deficit fitting) Being high humidity inside of head assy, small condensations can be seen thru the transparent body. But the condensation is normal. If the leakage is come out of the head assy, there is a strong possibility of the leakage problem. You shall organize the pressure test longer for confirming the deficit.
- Depend on the temperature and pipe movement, the test pressure may vary. During the process of the pressure test, keep to pay attention for the connecting points by visual and by touching. After the completion of the test, decrease the pressure first. Then you disassemble the test plug. It is dangerous when the pressure remains inside of pipe.